



Find out more about who we are and why we are different.

NCI UL provides an interactive, innovative experience that aims to engage students in a broad variety of activities.



NCIUL

This award is validated by The Open University

4 Selsdon Way, London - E14 9TS

Tel: (0044) 020 3846 1730

info@nciul.ac.uk

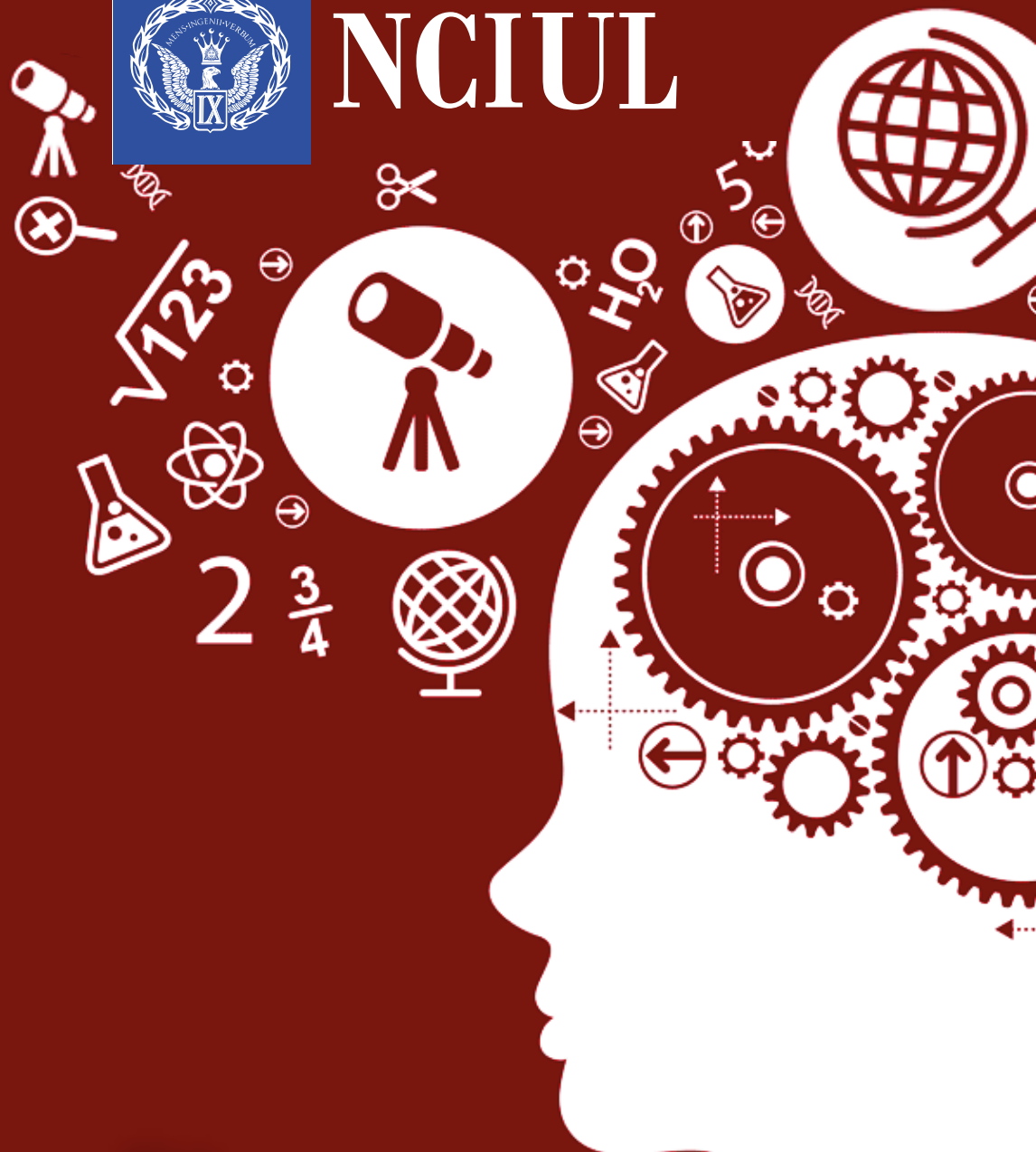
nciul.ac.uk



ACCREDITATION SERVICE
for
INTERNATIONAL COLLEGES



NCIUL



MSc

PSYCHOLOGY

MSc in PSYCHOLOGY

Who is this course for?

This course is for anyone who already has a degree other than Psychology, and wishes to learn about a range of psychological disciplines and theories from a variety of perspectives.

What will I get from this programme?

You will receive a grounding in Psychology, and will also be exposed to more specific branches within Psychology. Your studies will balance critical engagement with theory and research skills, needed for a career as a professional psychologist. You will have the opportunity to study with the modality the best fits your existing career and life commitments because the programme can be completed face-to-face or online, part-time or full-time.

Career Prospects

The MSc Conversion Course in Psychology offers an excellent and fast-tracking start for a career as a professional psychologist, for instance working in the clinical sector, in management, marketing, education, welfare industries, employment services, industrial relations, and media. We have dedicated Career Manager Service offering one-to-one coaching and career advice.

Ways to Study

This programme can be completed either face to face or online, part-time or full-time. By studying with us, you will have access to an innovative e-learning platform, where you can review lecture videos, interact with other students through chat rooms and dedicated forums, and find other course-related materials and readings. The e-learning platform is available to you 24 hours a day, 7 days a week, enabling you to flexibly fit studying into your life.

Programme Structure

Students take 7 courses in the first two terms and complete an independent research-based piece of work in the last term. Teaching is a through combination of lectures, seminar, and tutorials.

Courses

- Historical Issues in Psychology
- Quantitative Research Methods
- Qualitative Research Methods
- Biological Psychology
- Social Psychology
- Developmental Psychology
- Individual differences
- Cognitive Psychology
- Research project

How will I be assessed?

Assessment is based on the following:

- Coursework, which may include reports of practical work, written assignments, essays and oral presentations.
- One examination (for the Research Method module).
- Dissertation or Research Project. An individual research study.

